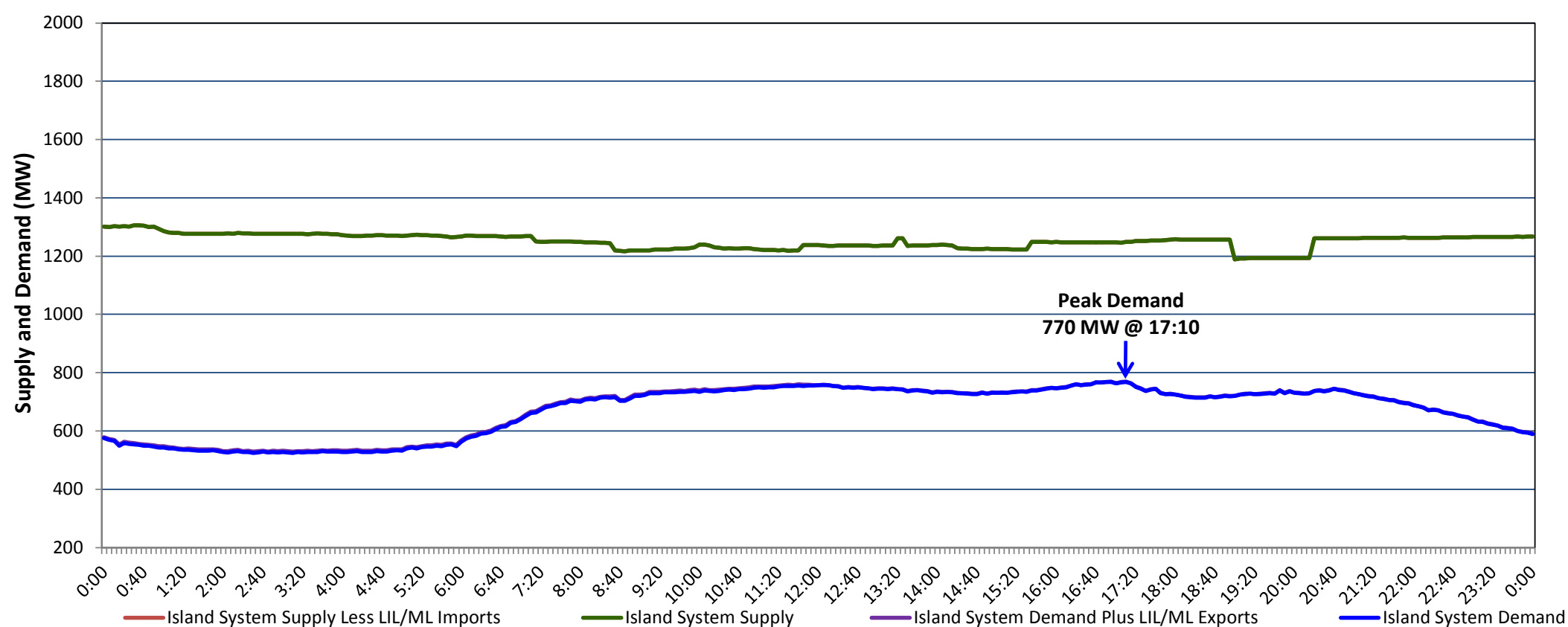


**Newfoundland Labrador Hydro (NLH)
Supply and Demand Status Report Filed Friday, October 01, 2021**

**Section 1
Island Interconnected System Supply, Demand & Exports
Actual 24 Hour System Performance For Wednesday, September 29, 2021**



Supply Notes For September 29, 2021

- 1,2
- A As of 0804 hours, May 26, 2021, Holyrood Unit 1 unavailable due to planned outage (170 MW).
 - B As of 0850 hours, July 25, 2021, Bay d'Espoir Unit 5 unavailable due to planned outage (76.5 MW).
 - C As of 1051 hours, July 25, 2021, Bay d'Espoir Unit 6 unavailable due to planned outage (76.5 MW).
 - D As of 1052 hours, August 01, 2021, Upper Salmon Unit unavailable due to planned outage (84 MW).
 - E As of 1500 hours, August 12, 2021, Holyrood Unit 2 unavailable due to planned outage (170 MW).
 - F As of 1006 hours, September 11, 2021, Holyrood Unit 3 unavailable (150 MW).
 - G At 0834 hours, September 29, 2021, Hardwoods Gas Turbine available at 25 MW (50 MW).
 - H At 1320 hours, September 29, 2021, Hardwoods Gas Turbine available at full capacity (50 MW).
 - I At 1327 hours, September 29, 2021, Hardwoods Gas Turbine available at 25 MW (50 MW).
 - J At 1531 hours, September 29, 2021, Hardwoods Gas Turbine available at full capacity (50 MW).
 - K At 1858 hours, September 29, 2021, Cat Arm Unit 1 unavailable (67 MW).
 - L At 2020 hours, September 29, 2021, Cat Arm Unit 1 available (67 MW).

**Section 2
Island Interconnected Supply and Demand**

| Thu, Sep 30, 2021 | Island System Outlook ³ | Seven-Day Forecast | Temperature (°C) | | Island System Daily Peak Demand (MW) | |
|--|------------------------------------|------------------------------|------------------|---------|--------------------------------------|-----------------------|
| | | | Morning | Evening | Forecast | Adjusted ⁷ |
| Available Island System Supply: ⁵ | 1,290 MW | Thursday, September 30, 2021 | 14 | 15 | 800 | 800 |
| NLH Island Generation: ^{4,8} | 965 MW | Friday, October 01, 2021 | 16 | 15 | 785 | 785 |
| NLH Island Power Purchases: ⁶ | 110 MW | Saturday, October 02, 2021 | 15 | 12 | 740 | 740 |
| Other Island Generation: | 215 MW | Sunday, October 03, 2021 | 11 | 10 | 785 | 785 |
| ML/LIL Imports: | - | Monday, October 04, 2021 | 8 | 7 | 850 | 850 |
| Current St. John's Temperature & Windchill: | 12 °C | Tuesday, October 05, 2021 | 8 | 8 | 870 | 870 |
| 7-Day Island Peak Demand Forecast: | 870 MW | Wednesday, October 06, 2021 | 8 | 7 | 850 | 850 |

Supply Notes For September 30, 2021

- 3
- Notes:
1. Generation outages for running and corrective maintenance are included. These are not unusual for power system operations. They generally do not impact customer supply. The power system operators schedule outages to system equipment whenever possible to coincide with periods when customer demands are low and sufficient supply reserves are available. However, from time to time equipment outages are necessary and reserves may be impacted.
 2. Due to the Island system having no synchronous connections to the larger North American grid, when there is a sudden loss of large generating units there may be a requirement for some customer's load to be interrupted for short periods to bring generation output equal to customer demand. This automatic action of power system protection, referred to as under frequency load shedding (UFLS), is necessary to ensure the integrity and reliability of system equipment. Under frequency events have typically occurred 5 to 8 times per year on the Island Interconnected System and the resultant customer load interruptions are generally less than 30 minutes. With the activation of the Maritime Link frequency controller during the winter of 2018, UFLS events have occurred less frequently.
 3. As of 0800 Hours.
 4. Gross output including station service at Holyrood (24.5 MW) and improved NLH hydraulic output due to water levels (35 MW).
 5. Gross output from all Island sources (including Note 4).
 6. NLH Island Power Purchases include: CBPP Co-Gen, Nalcor Exploits, Rattle Brook, Star Lake, Wind Generation and capacity assistance (when applicable).
 7. Adjusted for curtailable load, market activities and the impact of voltage reduction when applicable.
 8. Due to limitations inherent in the design of combustion turbines, the output of combustion turbines may be reduced in the event that ambient temperatures exceed the threshold required for full rated output. This threshold is dependent on the design of each turbine.

**Section 3
Island Peak Demand Information
Previous Day Actual Peak and Current Day Forecast Peak**

| | | | |
|-------------------|--|-------|--------|
| Wed, Sep 29, 2021 | Actual Island Peak Demand ⁸ | 17:10 | 770 MW |
| Thu, Sep 30, 2021 | Forecast Island Peak Demand | | 800 MW |

Notes: 8. Island Demand / LIL / ML Exports (where applicable) is supplied by NLH generation and purchases, plus generation owned and operated by Newfoundland Power and Corner Brook Pulp & Paper (Deer Lake Power, DLP).